

LIST OF FM and TV STATIONS OPERATING IN RWANDA AND THEIR APPROXIMATE COVERAGE.

Section 1 summarizes the radio stations approximate coverage in percentage and section 2 shows approximation coverage on maps as of 26th May 2020.

1. Radio Stations (Categorized based on covered area)

Station Name	Number of Transmitters	Approximate covered area	Transmitting station, site and frequency
RBA (Radio Rwanda and its community radios (CR))	28	98% See image 1	Radio Rwanda, Jali, 100.7 MHz Radio Rwanda, Rebero, 104.7 MHz Radio Rwanda, Huye, 103.9 MHz Radio Rwanda, Karisimbi, 88.0 MHz Radio Rwanda, Rushaki, 90.1 MHz Radio Rwanda, Gitwe, 92.4MHz Radio Rwanda, Kinanira, 92.9MHz Radio Rwanda, Nyarupfubire, 93.5 MHz Radio Rwanda, Rubona, 94.6 MHz Radio Rwanda, Mugogo, 95.1 MHz Radio Rwanda, karongi, 97.6MHz Radio Rwanda, Nyabitimbo, 100.4 MHz Radio Rwanda, Nyamasheke, 101.1 MHz Radio Rwanda, Bwishyura, 101.1 MHz Radio Rwanda, Byumba, 103.2 MHz Radio Rwanda, Gihundwe, 105.7 MHz Radio Rwanda, Rushaki, 106.8 MHz Radio Rwanda, Kiyanzi, 99.3 MHz Radio Rwanda, Kabuye, 92.4MHz Radio Rwanda Inteko, Jali, 101.5 MHz RBA CR Huye, Huye, 100.4 MHz RBA CR Musanze, Mugogo, 98.4MHz RBA CR Nyagatare, Nyarupfubire, 95.5 MHz RBA CR Rubavu, Rubona, 95.1 MHz RBA CR Rusizi, Nyabitimbo, 96.1MHz RBA CR Rusizi, Gihundwe, 89.8MHz RBA CR Rusizi, Karongi, 106.9 MHz RBA Magic FM, Jali, 90.7MHz
Radio Maria	5	80% See Image 2	Radio Maria, Huye, 88.6MHz Radio Maria, Jari, 97.3 MHz Radio Maria, Gihundwe, 99.4 MHz Radio Maria, Karongi, 99.8 MHz Radio Maria, Byumba, 96.4MHz
KT Radio	5	80% See Image 3	KT Radio, jali, 96.7MHz KT radio, Mugogo, 101.1MHz KT Radio, Karongi, 103.3MHz KT Radio, Huye, 107.9MHz KT Radio, Nyarupfubire, 107.9MHz
BBC	3	75% See Image 4	BBC, Karongi, 93.3MHz BBC, Jali, 93.9MHz BBC, Huye, 106.1MHz
Radio10	3	70% see image	Radio10, Jali, 87.6 MHz Radio10, Rubavu, 93.6 MHz

Station Name	Number of Transmitters	Approximate covered area	Transmitting station, site and frequency
		5	Radio10, Nyarupfubire 99 MHz
Radio Flash FM	3	70% See Image 6	Flash FM, Jali, 89.2 MHz Flash FM, Nyarupfubire, 90.4MHz Flash FM, Karongi, 95.7 MHz
Radio Salus	2	65% See Image 7	Salus Radio, Jali, 101.9 MHz Salus Radio, Huye, 97 MHz
<ul style="list-style-type: none"> - City Radio - Isango star - K-FM - Radio Huguka - Radio one - Royal FM - KISS FM - Authentic radio - Inkoramutima radio - Voice of Africa - Voice of Hope - Radio Umucyo - Voice of America - RFI Radio - Fine FM Radio - Life radio - Sana Radio - Hot FM Radio - Vision Radio 	1	60 % See image 8	<ul style="list-style-type: none"> City Radio Jali, 88.3 MHz Isango star Jali, 91.5MHz K-FM Rebero, 98.7 MHz Radio Huguka Jali, 105.9 MHz Radio one Jali, 91.1MHz Royal FM Jali, 94.3 MHz Kiss FM Jali, 102.3 MHz Authentic radio Jali, 92.8MHz Inkoramutima Radio Jali, 107.1 MHz Voice of Africa Jali, 94.7 MHz Voice of Hope Jali, 106.4 MHz Radio Umucyo Jali, 102.8 MHz Voice of America Jali, 104.3 MHz RFI Radio Jali, 91.9 MHz Fine FM, Jali, 93.1MHz Life radio Jali, 96MHz Sana Radio Jali, 98MHz Hot FM radio Jali, 103.6MHz Vision Radio Jali, 104.1MHz
Energy radio	1	30% operating at Musanze. See Image 9	Mugogo, 88.8MHz
<ul style="list-style-type: none"> - Isangano Community Radio - Ishingiro Community Radio - Radio Izuba Community Radio 		15 % Depending on transmitter location. See Images 10, 11 and 12	<ul style="list-style-type: none"> Isangano CR, Karongi, 89.4 MHz. Ishingiro CR, Byumba, 107.5 MHz Radio Izuba CR, Kibungo, 100.0 MHz

2. The coverage of radio stations on maps

The coverage analysis was done using the parameters assigned in the licenses and below are the general parameters assigned;

- Antenna height above ground level: 50m
- Signal type: FM Stereo for Radio
- Transmitter power: 1 KW
- Antenna gain: 8 dBi
- Propagation model: Fresnel method

Image 1: Approximate coverage of Radio Rwanda

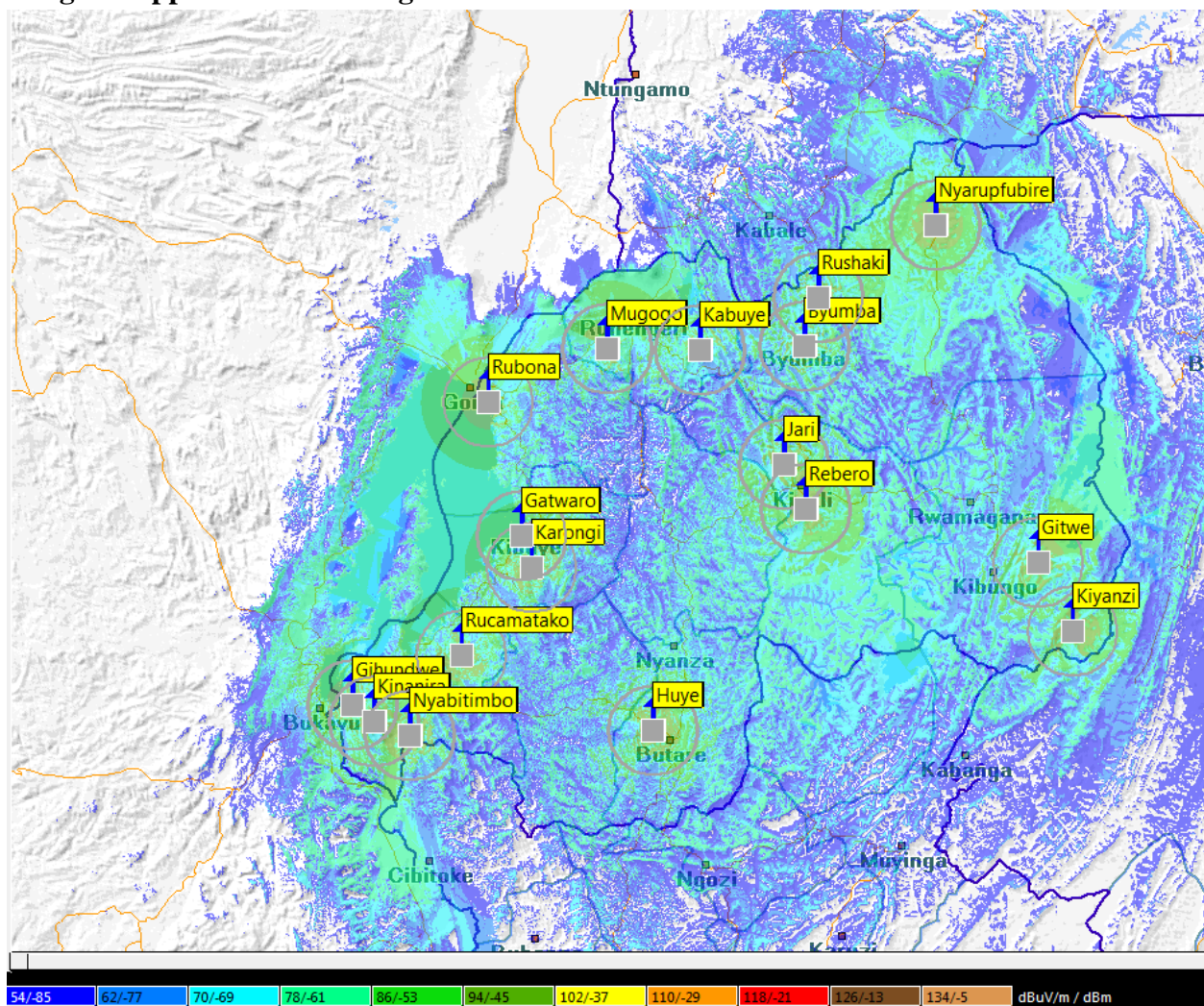


Image 2: Approximate coverage of Radio Maria

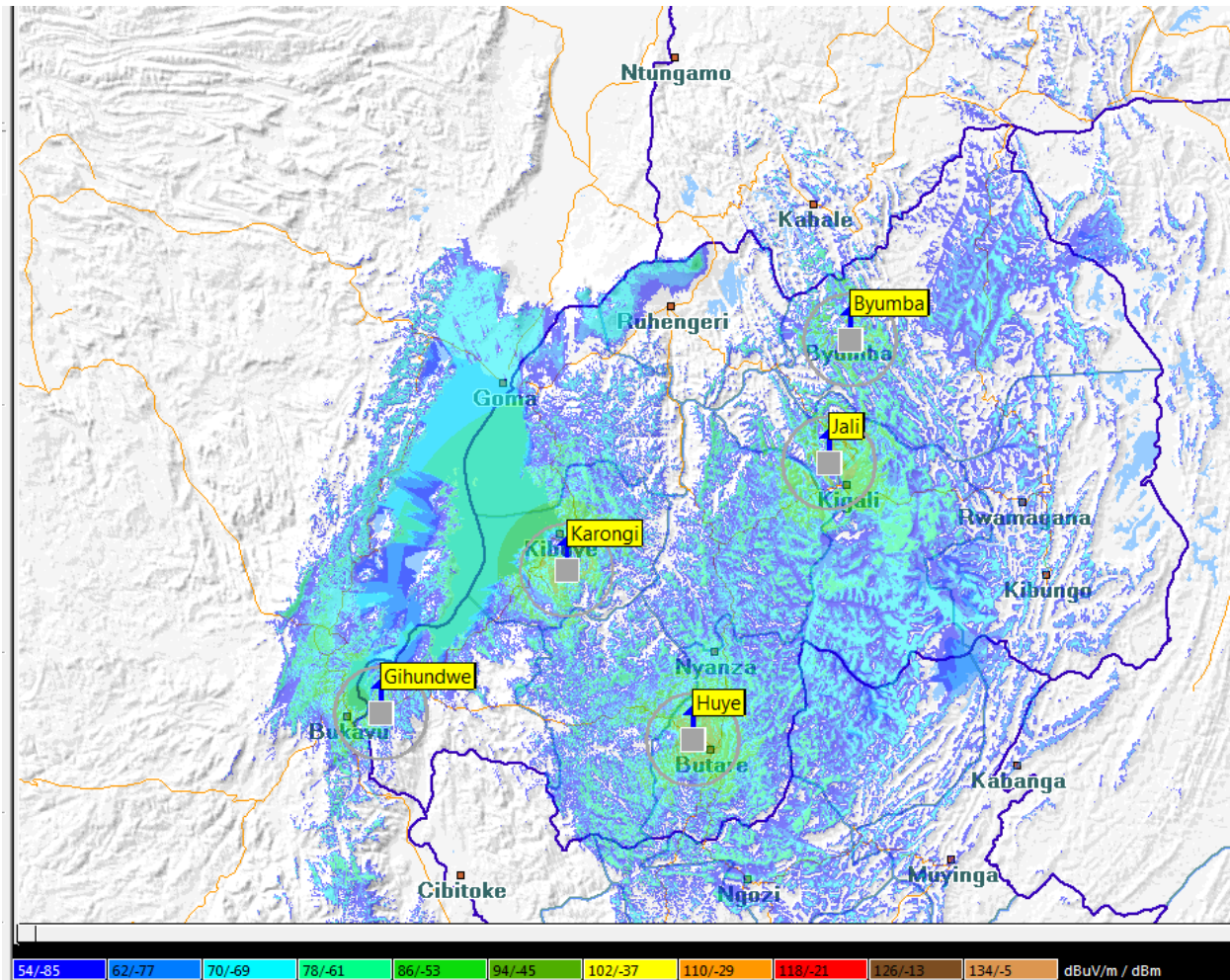


Image3: Approximate coverage of KT Radio

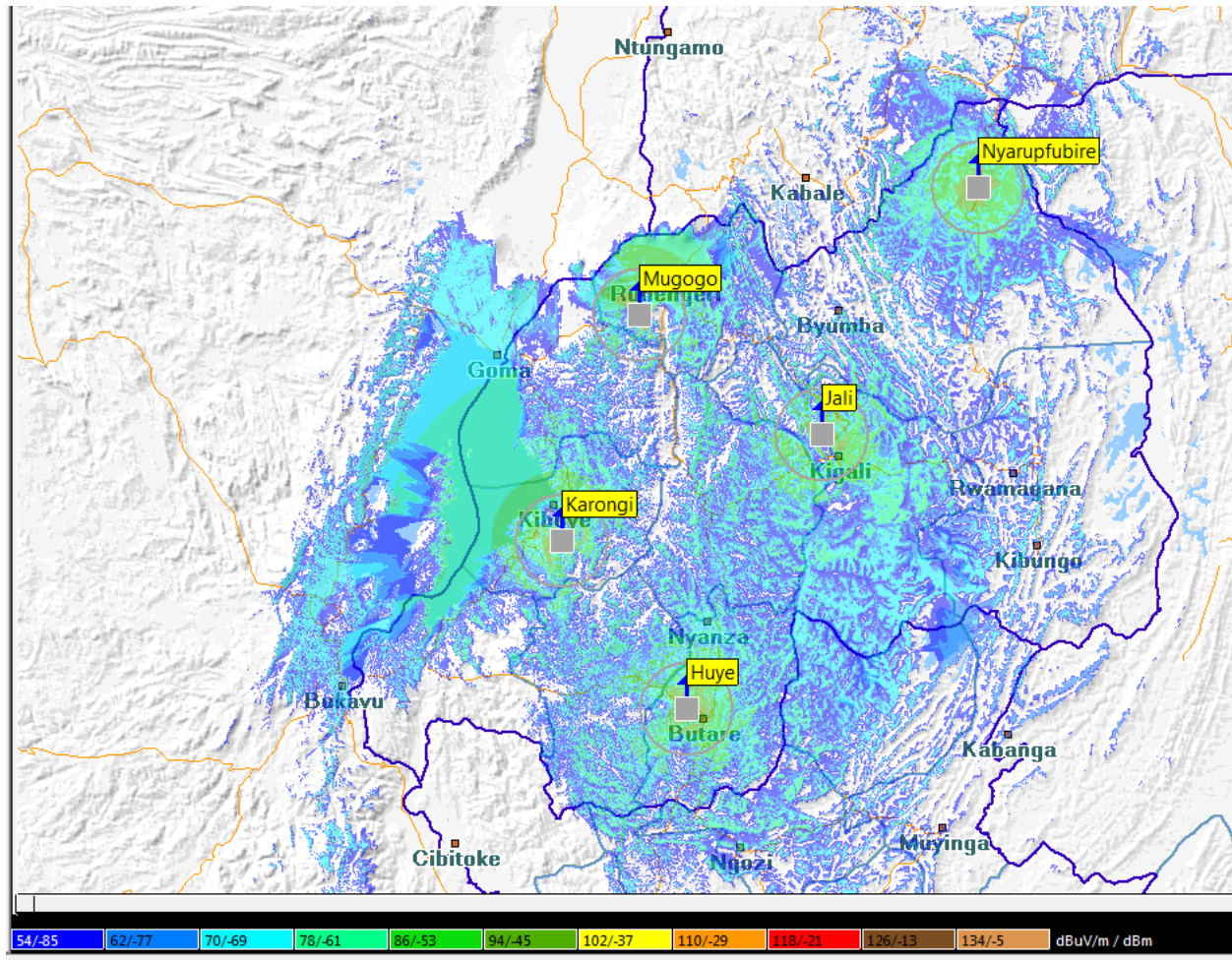


Image4: Approximate coverage of BBC Radio

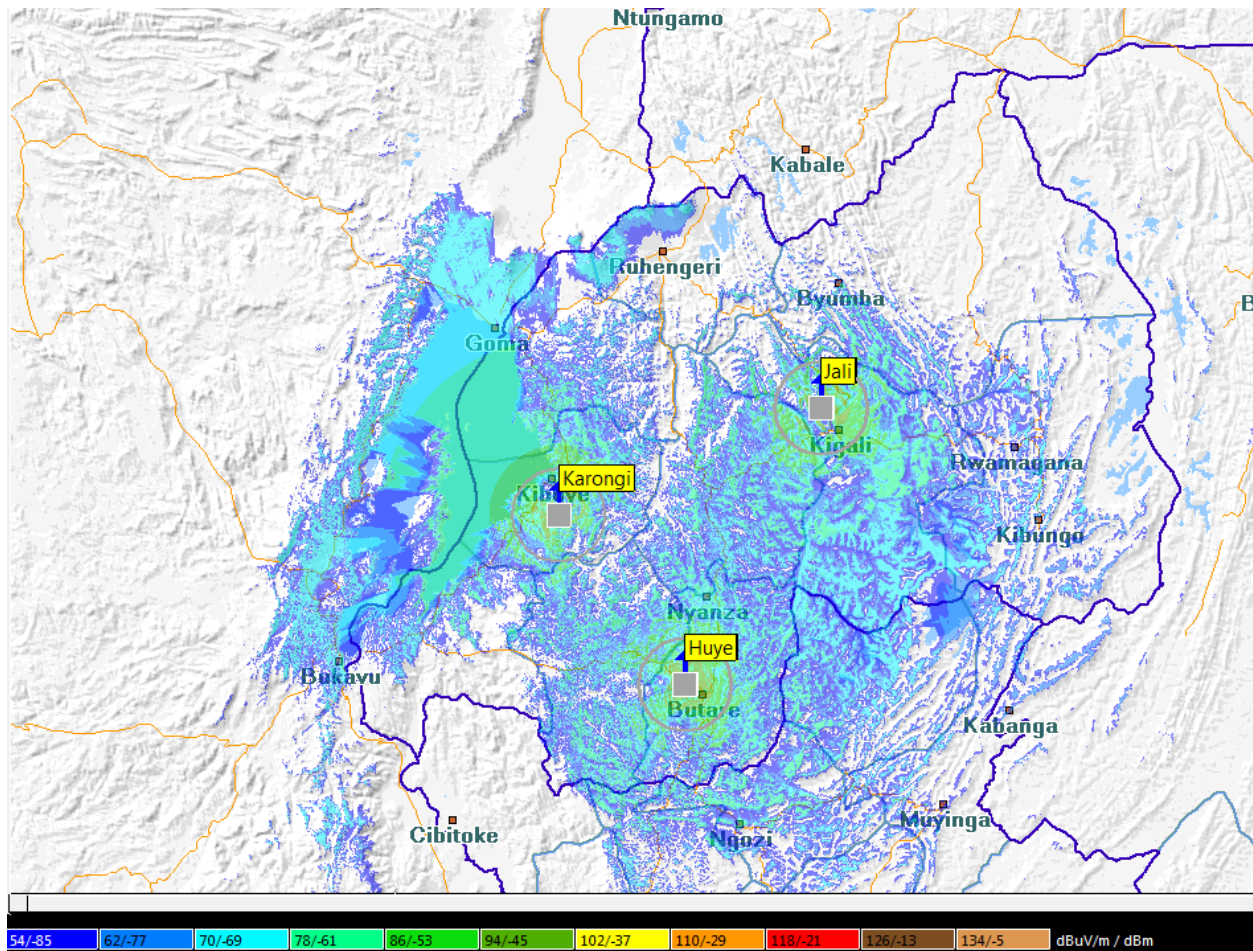


Image 5: Approximate coverage of Radio10 FM

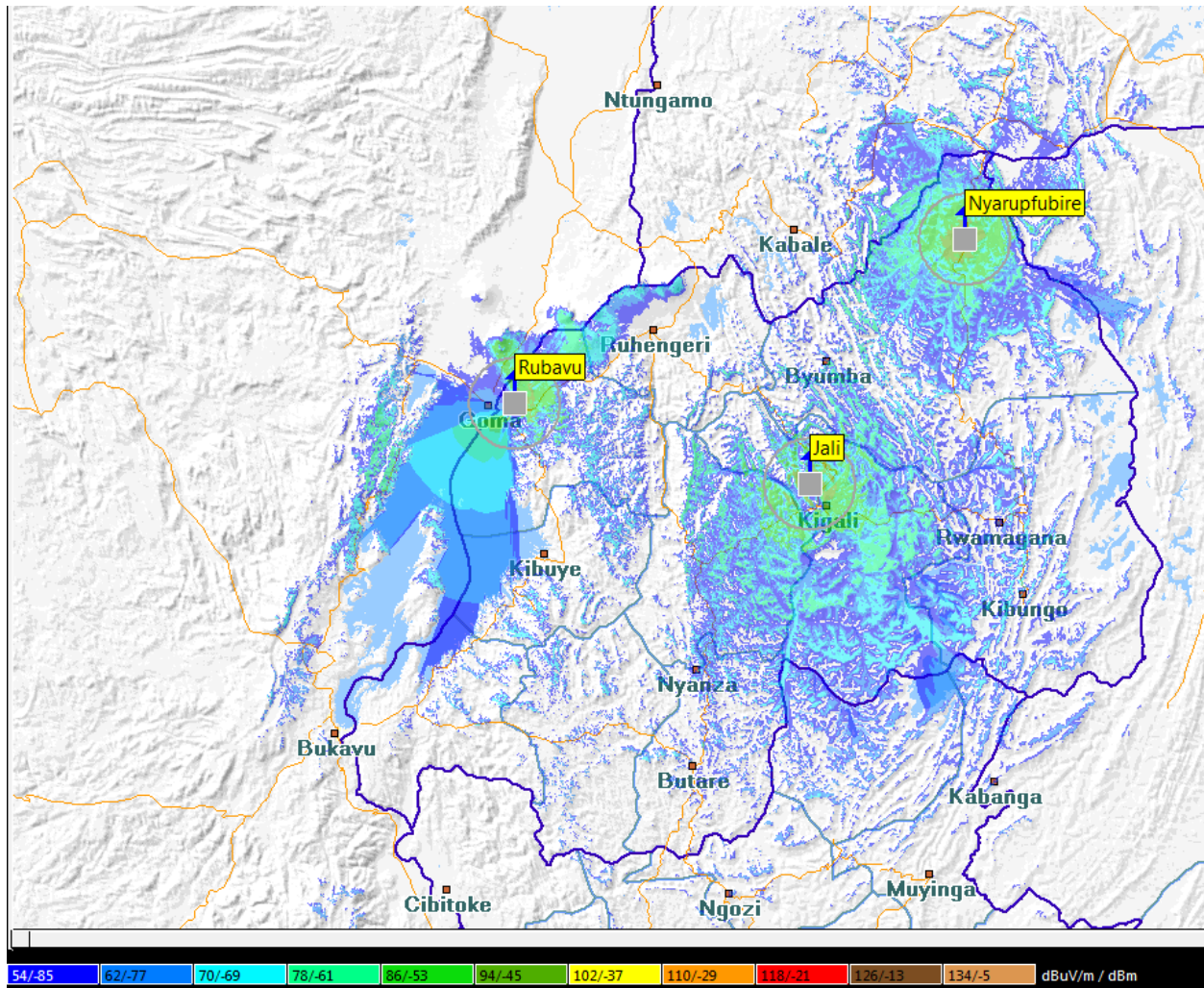
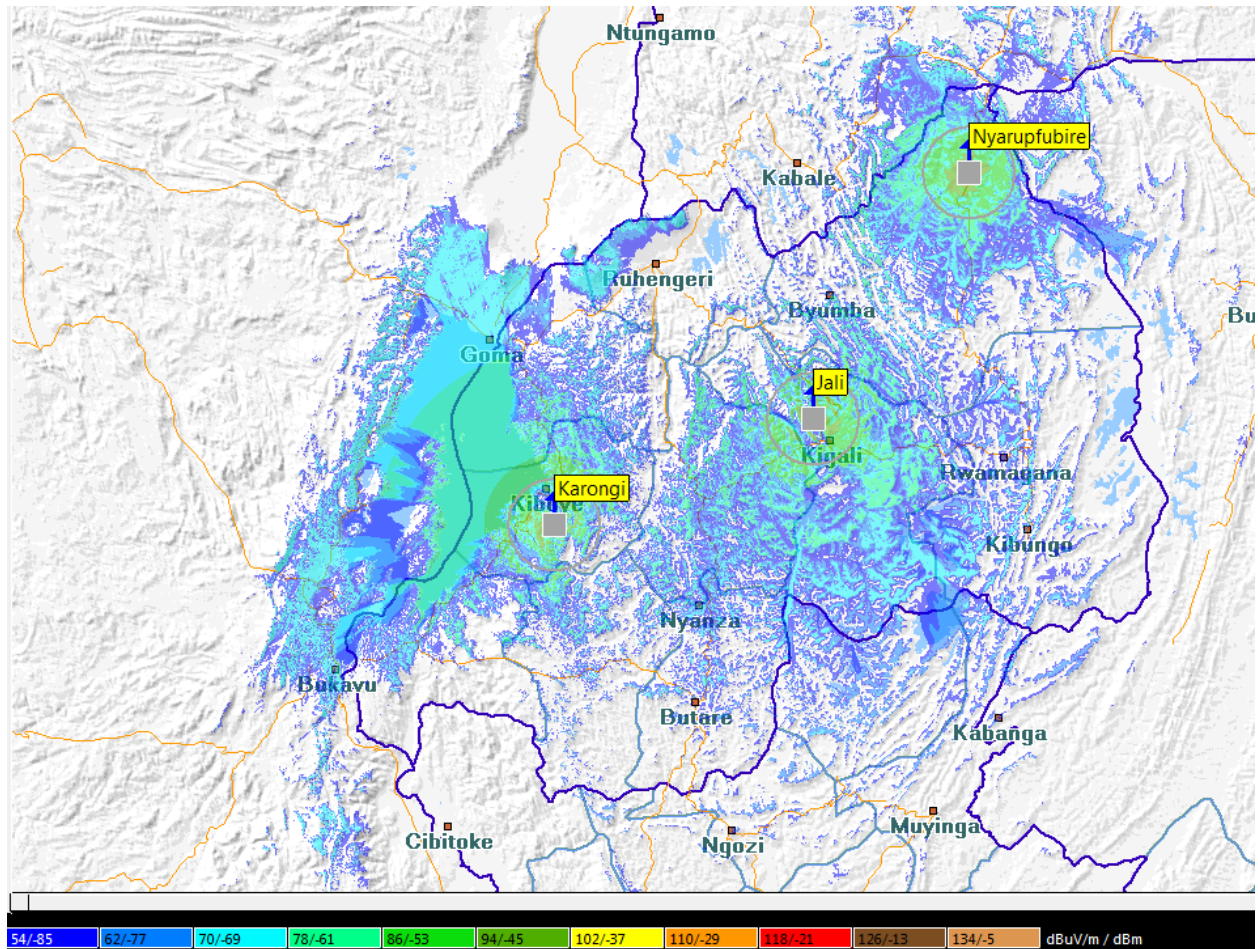


Image6: Approximate coverage of Radio Flash FM



The map shows the Kivu region with major cities labeled: Ntungamo, Kabale, Ruhengeri, Goma, Kibuye, Bukavu, Cibitoke, Nyanza, Butare, Huye, Jali, Kigali, Rwamagana, Kibungo, Kabanga, Musinga, and Ngazi. The 1000-hour isohyets of the 1998-2000 El Niño event are overlaid on the map, showing a significant area of high rainfall intensity (red and orange) in the central and eastern parts of the region, particularly around Kigali and Butare. The legend at the bottom indicates the following values in dBuV/m and dBm:

54/-85	62/-77	70/-69	78/-61	86/-53	94/-45	102/-37	110/-29	118/-21	126/-13	134/-5	dBuV/m / dBm
--------	--------	--------	--------	--------	--------	---------	---------	---------	---------	--------	--------------

(City Radio, Isango star, K-FM, Huguka Radio, Radio one, Authentic, Inkoramutima Radio, Voice of Africa, Voice of Hope, Kiss FM, Royal FM, Hot FM, Radio Umucyo, Voice of America, Fine FM, Life radio, Sana Radio, Vision Radio & RFI).

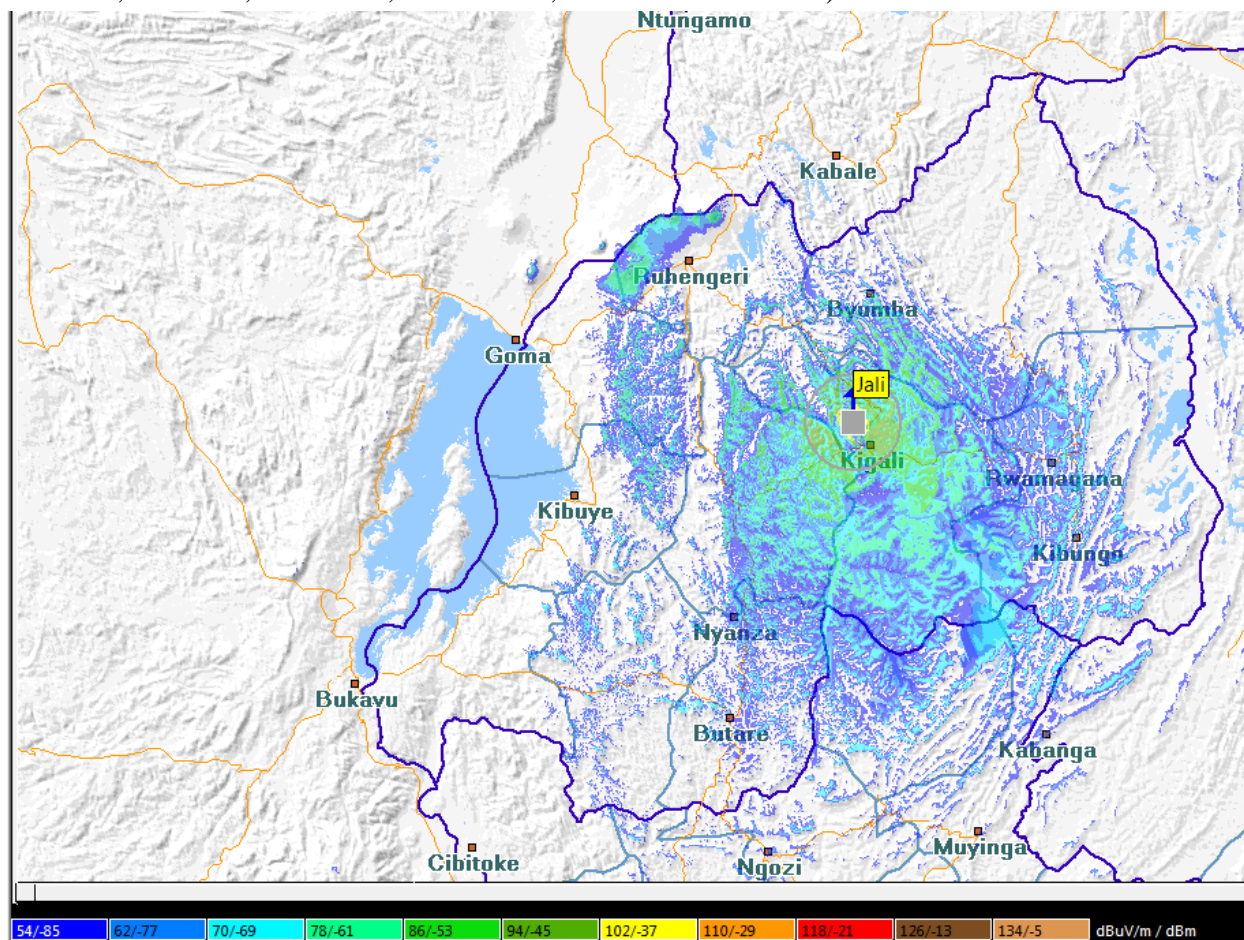


Image 9: Approximate coverage of Energy Radio

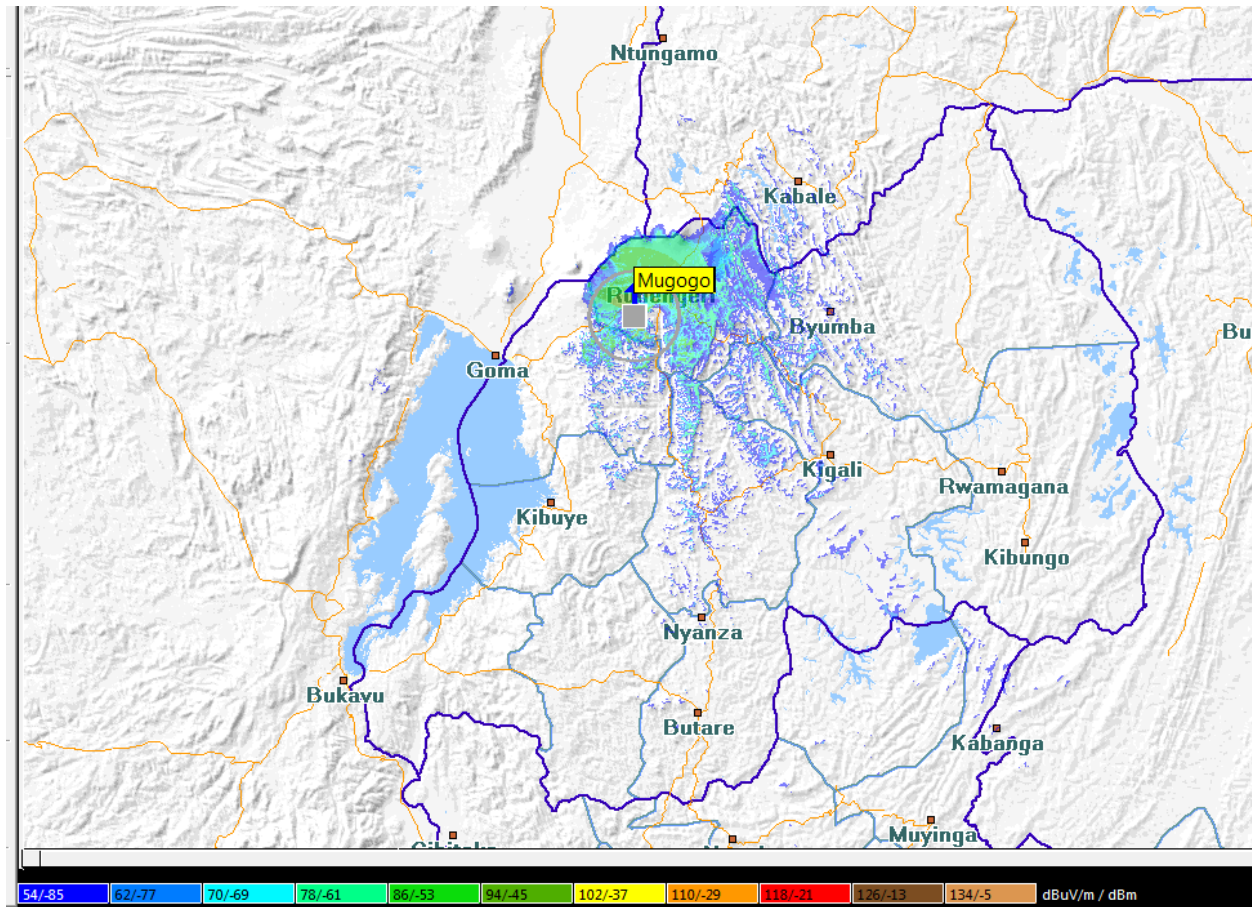


Image 10: Approximate coverage of Isangano radio

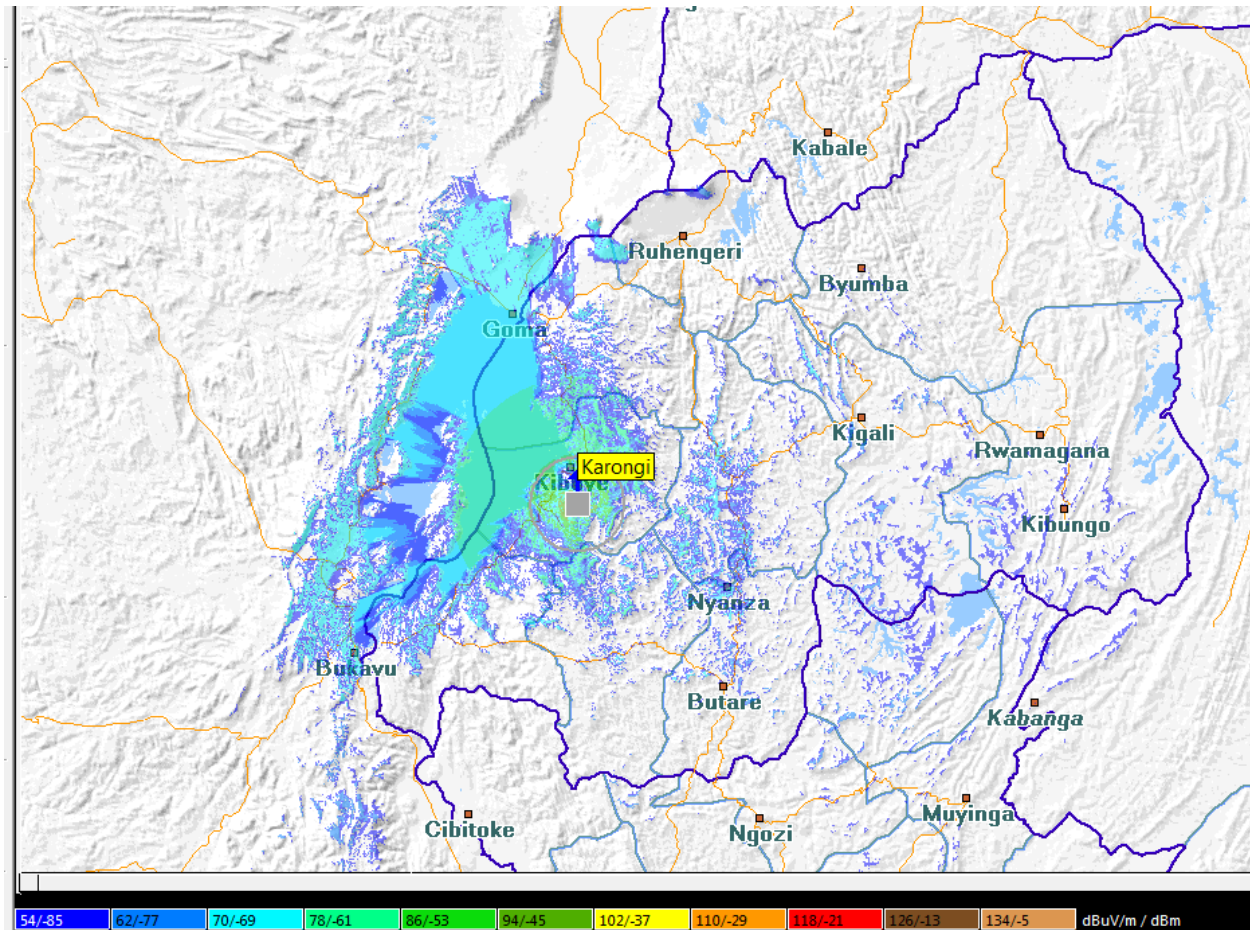


Image 11: Approximate Radio coverage for Ishingiro Radio

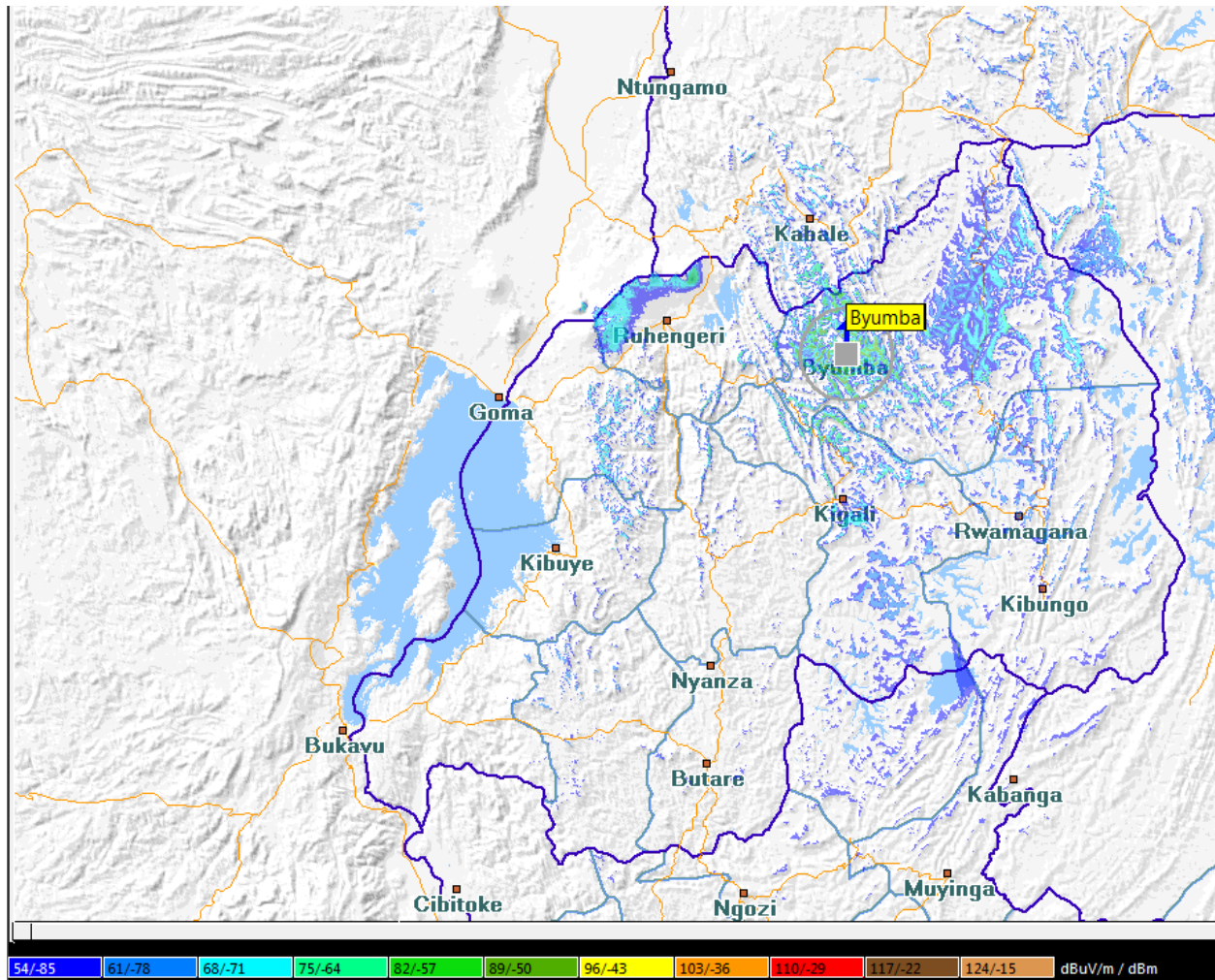
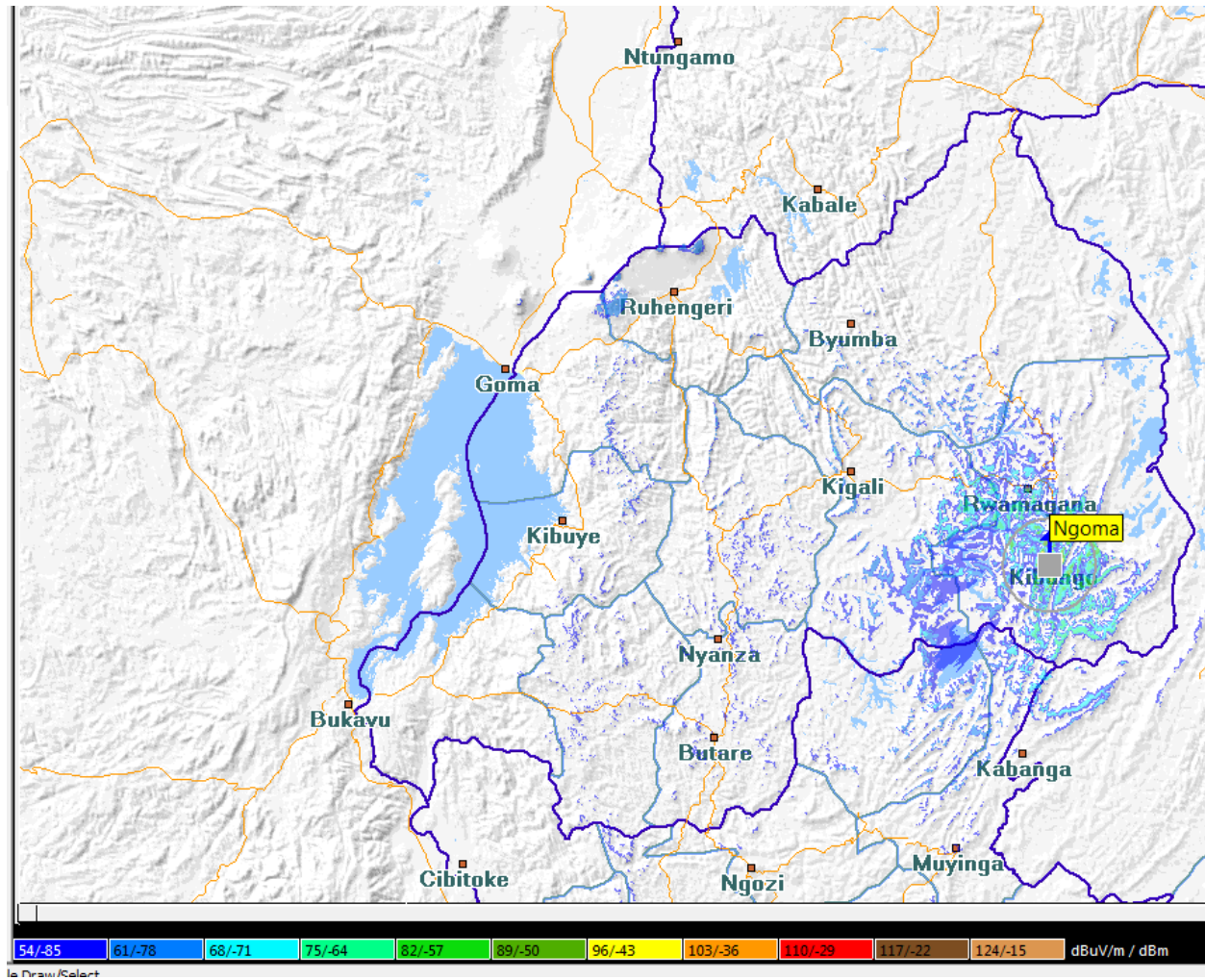


Image 12: Approximate Radio coverage for Izuba radio



3. APPROXIMATE COVERAGE OF TV STATIONS IN RWANDA

In digital TV broadcasting, there are two signal distributors namely Rwanda Broadcasting Agency (RBA) with 14 transmitters located at 14 sites and PANAFRICA Network Group Ltd with 18 transmitters located at 6 sites.

The aim of this document is to show their simulated coverage. It can help the signal distributors to add gap fillers to cover the areas not covered or add new transmitters in the areas not covered. Further, TV content providers can understand the coverage of their TV contents.

This document contains two parts; the simulated coverage of each network and TV stations broadcasted in each network. The TV stations on RBA network platform covers 80% and on PANAFRICA Network Group Ltd platform covers 60% of the whole country on terrestrial platform.

1. PART ONE: THE SIMULATED COVERAGE

Fig1: Rwanda Broadcasting Agency Digital TV network Coverage

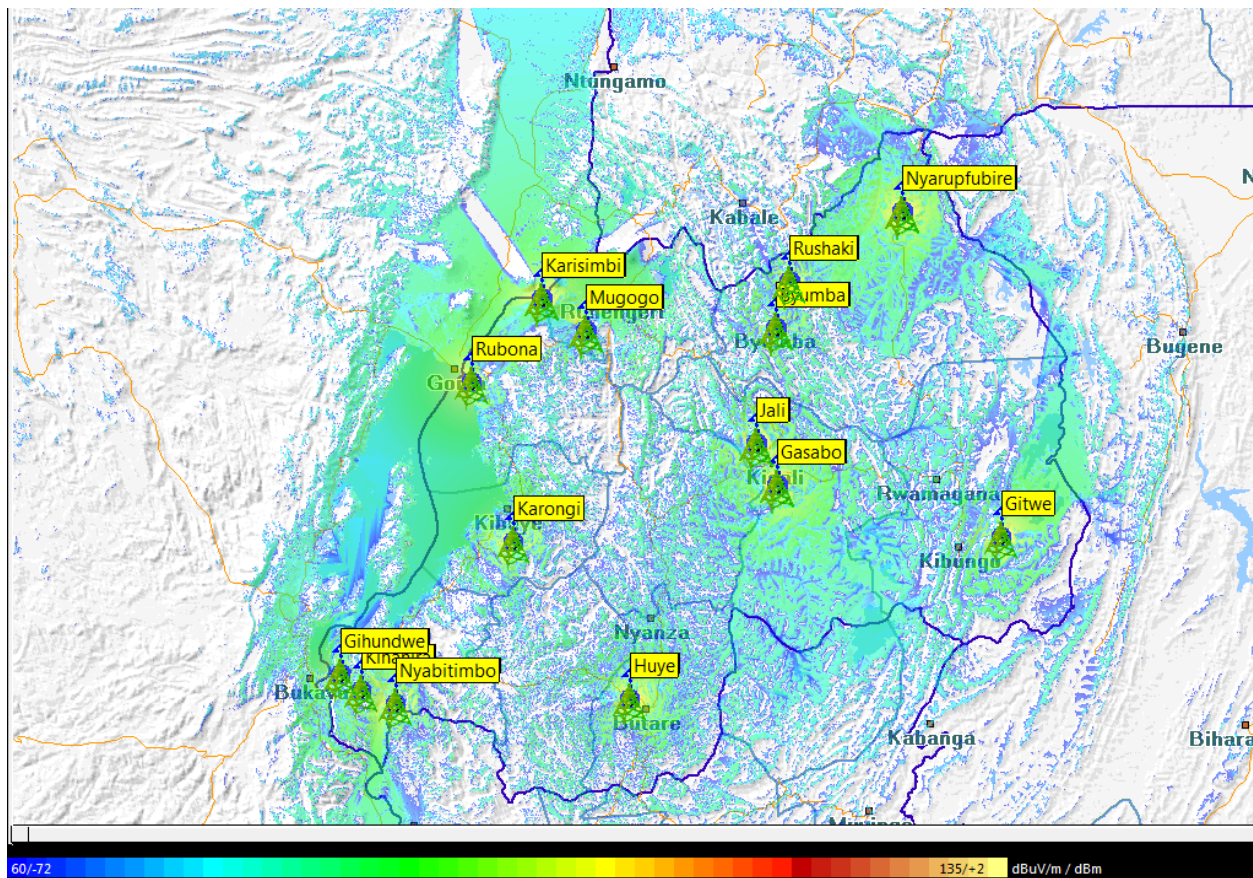
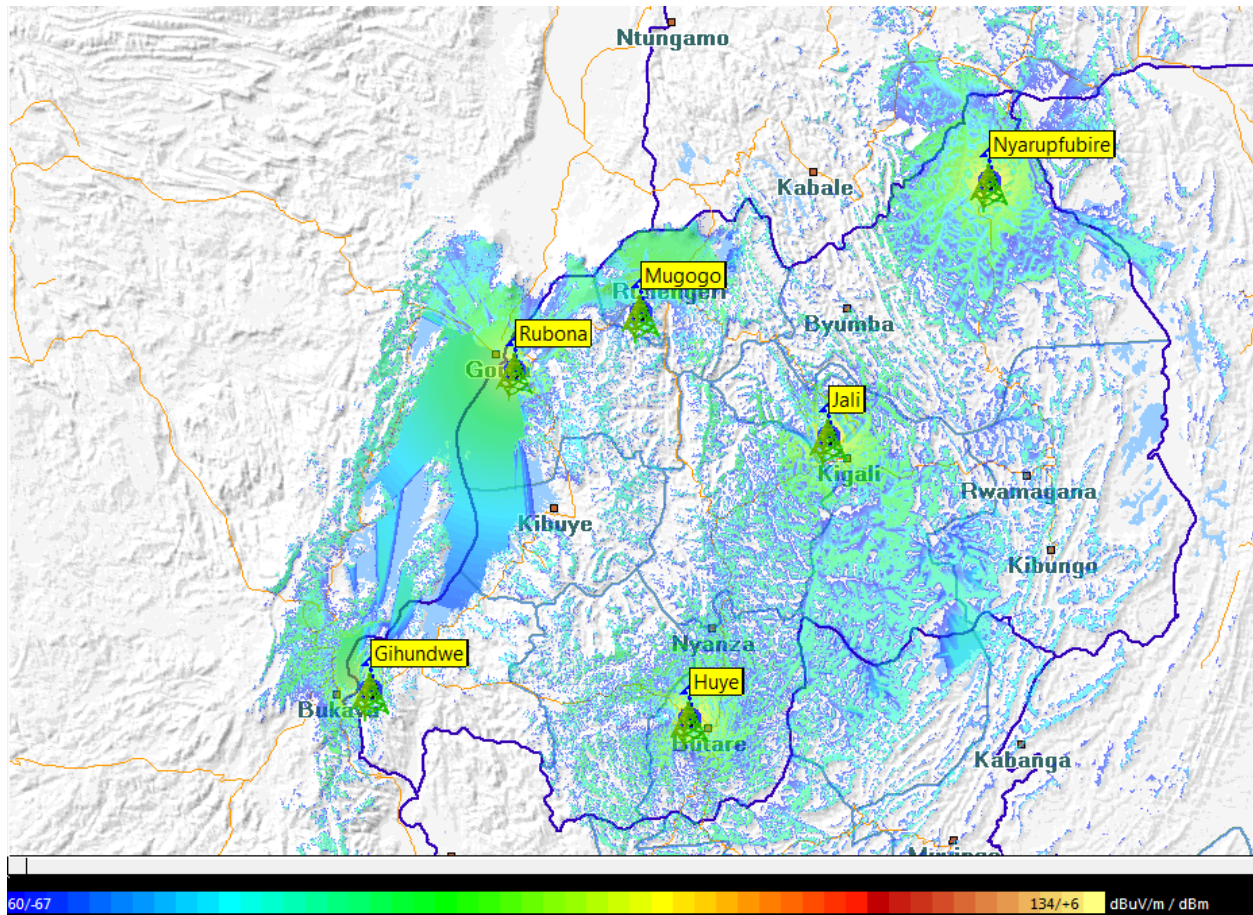


Fig2: PANAFRICA Network Group Ltd Digital TV Network Coverage



TV STATIONS CARRIED IN EACH SIGNAL DISTRIBUTOR'S NETWORK

a) TV stations at RBA Network

1. Rwanda Television(RTV)
2. Isango Star TV
3. TV One
4. Flash TV
5. Big Television Network (BTN) TV
6. France 24 French
7. France 24 English
8. Pacis TV.
9. KC2.

b) TV Stations at PanAfrica Network Group Ltd Network

1. TV One
2. Flash TV
3. Big Television Network (BTN) TV
4. Authentic TV
5. Rwanda Television (RTV)
6. Isango Star TV
7. TV10
8. Victory TV
9. Prime TV
10. Buryohe TV
11. Isibo TV
12. KC2
13. Izuba TV

Disclaimer: These radio and TV stations coverage are simulated coverages using ICS telecom software. The data provided are for general information purposes only.